

ウラナミジャノメ属 *motschulskyi* 群の総説 その2

植村好延*

A revisional guide to the *motschulskyi*-group of
the genus *Ypthima* Hübner (Lepidoptera: Nymphalidae, Satyrinae) Part II

Yoshinobu Uémura*

はじめに

タテハチョウ科ジャノメチョウ亜科ウラナミジャノメ属のチョウはアジアに100種以上、アフリカに約15種、マダガスカルに約40種を擁する大属で、多数の酷似種があり季節変異と個体変異が大きく種の特徴を明瞭に捉えるのが困難で、そのため同定のもっとも困難なグループのひとつである。ウラナミジャノメ属内の系統関係は Shirôzu and Shima (1979), 寫 (1988) により論じられたが、同定の手助けとなるような種の総説はまだない。

今後筆者は種群ごとに種の総説をおこなっていく予定で、その第一弾として *megalomma* 群の (植村, 2018), 第二弾として *tappana* 群の (植村, 2019), 第三弾として *mothschulskyi* 群の総説 (その1) (植村, 2020a), 第四弾として *sakra* 群の総説 (植村, 2020b および投稿中) をまとめた。ここではその第五弾として *mothschulskyi* 群の総説 (その2) をあつかう。

本文中の略号は以下の通り: UP = upperside, UN = underside, BMNH = Natural History Museum, London, KMNH = Kitakyushu Museum of Natural History and Human History, KUEL = Entomological Laboratory, Faculty of Agriculture, Kyushu University, Fukuoka.

分布記録は所検標本の産地を拾って記録している。文献上からの分布記録は引用を明記してシノニムリス

トあるいは引用文献と対照もしくは参照できるようにしてある。

本稿を草するにあたり、比較標本の提供などで青木俊明・山口就平 (進化生物学研究所), 小岩屋敏 (宮崎市), 高橋真弓 (静岡市), 杉山整 (岐阜市), Huang Hao (Qingdao), A.L. Monastyrskii (Vietnam Forest Museum of the Forest Inventory and Planning Institute, Hanoi) の諸氏にお世話になった。お礼申し上げる。

Motschulskyi 群各種 (承前)

Ypthima imitans Elwes & Edwards, 1893

Ypthima [sic] *pandocus*: Moore, 1878: 696. Hainan.

Ypthima imitans Elwes & Edwards, 1893: 17, pl. 3, fig. 53 (♂ genitalia). Holotype ♂, Hainan (BMNH, B.M. Type No. Rh. 3371).

Ypthima multistriata imitans: Fruhstorfer, 1911: 291. Hainan.

Ypthima imitans: Joicey & Talbot, 1928: 185. Interior, Five Finger Mountains, Namfung, Hainan.

Ypthima multistriata imitans: Sonan, 1938: 355.

Ypthima multistriata: Forster, 1948: 480. Kunkalashan, Szechwan.

Ypthima motschulskyi imitans: Marsh, 1968: 61, pl. 20, figs. 12 ♂ (UP), 13 ♂ (UN). Hong Kong.

Ypthima motschulskyi imitans: Hill *et al.*, 1978: 8. Hong Kong.

Ypthima imitans: Shirôzu & Shima, 1979: 272, pl. 38, fig. 41

*つくば市立豊里ゆかりの森昆虫館. Toyosato Museum of Entomology, 676 Tohigashi, Tsukuba, Ibaraki 300-2633, Japan. E-mail: yuemura@mail1.accsnet.ne.jp

原稿受付 2020年10月29日. Manuscript received Oct. 29, 2020.

原稿受理 2020年11月11日. Manuscript accepted Nov. 11, 2020.

キーワード: 分類学, チョウ目, ジャノメチョウ亜科, ウラナミジャノメ属, *motschulskyi* 群.

Key words: Taxonomy, Lepidoptera, Satyrinae, *Ypthima*, *Ypthima motschulskyi*-group.



第1図. *Ypthima motchulskyi*-group 各種の発香鱗.

a, *Y. imitans*, Jiulian Shan, Guangdong; b, *Y. imitans*, Tam Dao, N. Vietnam; c, *Y. sordida*, Taibai Shan, Shaanxi; d, *Y. eckweileri*, Liuba/Zhangliang, Shaanxi; e, *Y. perfecta*, Kangding, Sichuan; f, *Y. perfecta*, Wolong, Sichuan; g, *Y. kitawakii*, Dali, Yunnan; h, *Y. kitawakii*, Dali, Yunnan; i, *Y. akragas akragas*, Taiwan; j, *Y. akragas perfectoides*, Kangding, Sichuan; k, *Y. esakii esakii*, Taiwan; l, *Y. esakii wangi*, Taiwan; m, *Y. masakii*, Iriomote-jima Is.; n, *Y. multistriata ganus*, Xiushui, Jiangxi; o, *Y. multistriata ganus*, Korea; p, *Y. multistriata ganus*, Tsushima; q, *Y. multistriata forsteri*, Dali, Yunnan; r, *Y. multistriata forsteri*, Lijiang, Yunnan; s, *Y. multistriata multistriata*, Taiwan; t, *Y. multistriata multistriata*, Taiwan; u, *Y. multistriata nipponica*, Kagoshima, Kyushu; v, *Y. motchulskyi motchulskyi*, Baoji/Liuba, Shaanxi; w, *Y. yangjiahei*, Nidadan, Yunnan.

(♂ genitalia), pl. 50, fig. 73 (♀ genitalia), pl. 52, fig. 27 (androconia), pl. 68, figs. 127 ♂ (UP), 128 ♂ (UN), pl. 69, figs. 129 ♀ (UP), 130 ♀ (UN). Hainan. Phylogeny.

Ypthima motchulskyi: Wu, 1988: 85, pl. [11], figs. 7 ♂ (UP), 8 ♂ (UN). Dinghu Shan, Kwangtung.

Ypthima imitans: Chou *et al.*, 1994: 394, figs. ♂ (UP & UN). Yunnan [loc. err.? Sichuan?].

Ypthima esakii: Gu & Chen, 1997: 160, figs. 149 ♂ [recte ♀] (UP & UN). Hainan.

Ypthima motchulskyi: Gu & Chen, 1997: 160, figs. 150 ♂ (UP & UN). Hainan.

Ypthima multistriata imitans: Gu & Chen, 1997: 161, figs. 151 ♂ (UP & UN), ♀ (UP & UN). Hainan.

Ypthima motchulskyi imitans: Bascombe *et al.*, 1999: 286–287, text-figs. 9.26 (venation, ♀), 9.27D (♂ genitalia), 9.28 (forewing underside), pl. 56, figs. 21/22 ♂ (UP & UN), 23/24 ♀ (UP & UN), pl. 185, figs. 8–15 (early stage). Hong Kong.

Ypthima imitans: Monastyrskii & Devyatkin, 2003: 20. N., C. [Vietnam].

Ypthima imitans: Uémura & Monastyrskii, 2004: 36, figs. 2ff, 2gg (androconia), 7.5 (♂, UP & UN), 7.6 (♀, UP & UN), 10 (distribution map). Ba Be National Park, Bac Can Province, N. Vietnam; Na Hang, Tuyen Quang Province, N. Vietnam; Tam Dao National Park, Vinh Phu Province, N. Vietnam;

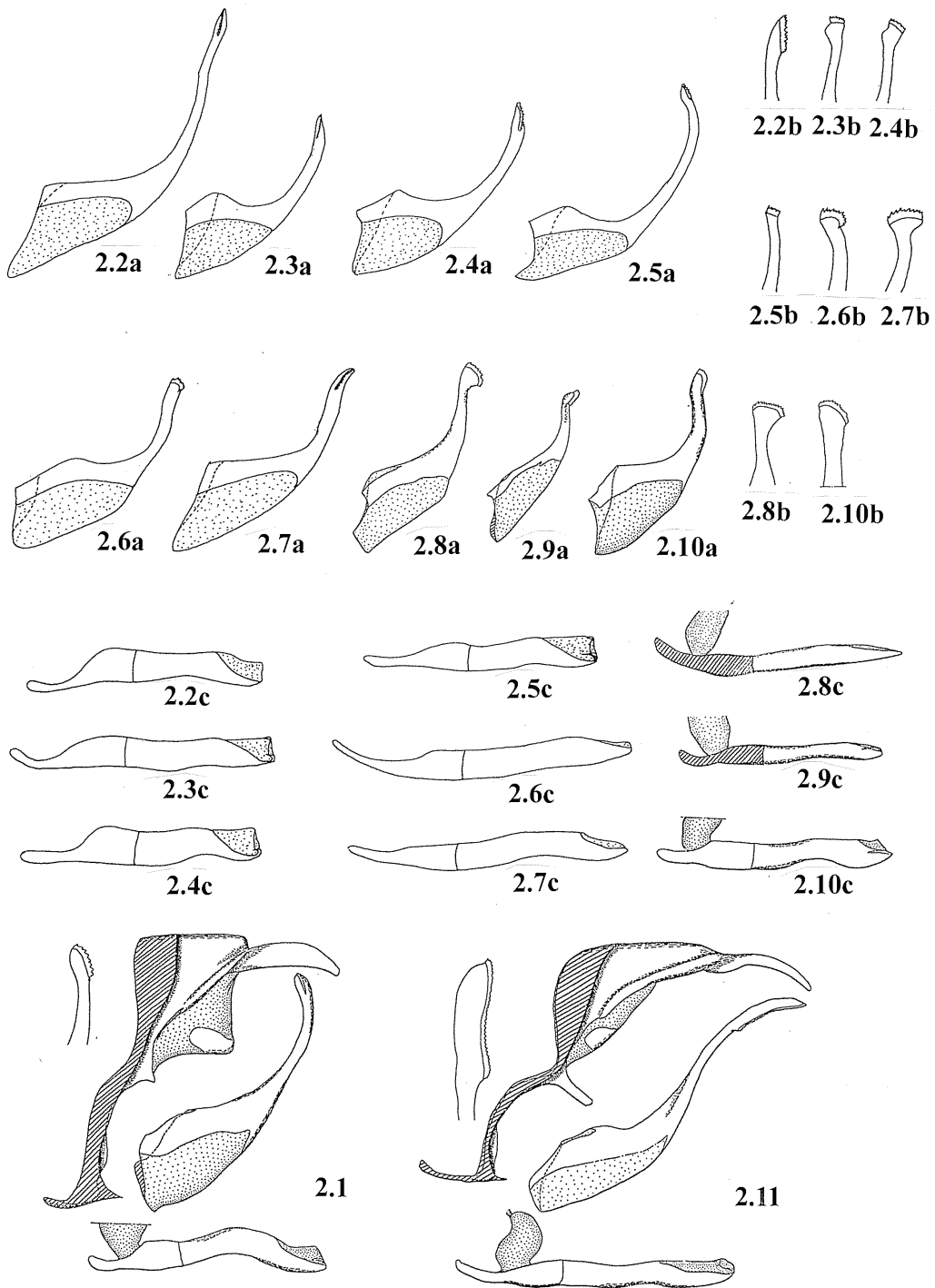
Cuc Phuong National Park, Ninh Binh Province, N. Vietnam; Ben En National Park, Thanh Hoa Province, C. Vietnam; Pu Hoat Nature Reserve, Nghe An Province, C. Vietnam; Pu Mat Nature Reserve, Nghe An Province, C. Vietnam; Vu Quang Nature Reserve, Ha Tinh Province, C. Vietnam.

所検標本. 70 ♂♂, 30 ♀♀.

前翅長: ♂, 22–24 mm (1st brood), 19–20 mm (2nd brood); ♀, 22 mm (1st brood), 20–21 mm (2nd brood).

地理の分布. 中国, ベトナム.

分布記録. 中国江西省 Jiangxi (Kiangsi): 武夷山 Wuyi Shan. 広東省 Guangdong (Kwangtung): 九連山 Jiulian Shan (Kiulin Shan); 鼎湖山 Dinghu Shan (Wu, 1988); 羅浮山 Lohfau Shan. 香港 Hong Kong. 広西壮族自治区 Guangxi (Kwangsi): 苗兒山, 龍勝 Miao'er Shan, Longsheng; 大瑤山, 金秀 Dayao (Tayao) Shan Mts., Jinxiu (Kinsiu). 海南島 Hainan. 四川省 Sichuan (Szechwan): 康定 Kangding (Kangting = Tatsienlu); Kunkalashan (Forster, 1948); 米易 Miyi. ベトナム: Ba Be National Park; Na Hang; Tam Dao National Park; Cuc Phuong National Park; Ben En National Park; Pu Hoat Nature Reserve; Pu Mat Nature Reserve; Vu Quang Nature Reserve.



第2図. *Ypthima motschulskyi*-group 各種の♂交尾器 (Uémura and Koiwaya, 2001 および Shirôzu and Shima, 1979 より改写転載). 2.1, *Y. imitans*; 2.2a, b, c, *sordida*; 2.3a, b, c, *Y. eckweileri*; 2.4a, b, c, *Y. perfecta*; 2.5a, b, c, *kitawakii*; 2.6a, b, c, *Y. akragas akragas*; 2.7a, b, c, *Y. akragas perfectoides*; 2.8a, b, c, *Y. esakii esakii*; 2.9a, c, *Y. masakii*; 2.10a, b, c, *Y. multistriata nipponica*; 2.11; *Y. motschulskyi motschulskyi*; a, right valva 内面図; b, valva 先端部; c, aedeagus 側面図.

Ypthima sordida Elwes & Edwards, 1893

Additional synonymic list after Uémura & Koiwaya, 2001.

Ypthima sordida : Uémura & Koiwaya, 2001: 3, figs. 1a-b (androconia), 2 (♂ genitalia), pl. 1, figs. 1 ♂ (UP & UN, Taibai Shan), 2 ♂ (UP & UN, Taibai Shan). Redescription. [Synonymy with *Y. sordida tsinlingi*.]

所検標本. 45 ♂♂, 6 ♀♀.

前翅長: ♂, 22–23 mm; ♀, 23–24 mm.

地理的分布. 中国北部, 中部.

分布記録. 中国陝西省 Shaanxi (Shensi): 秦嶺 Qin Ling (Chin Ling); 太白山 Taibai Shan (Tapai Shan). 安徽省 Anhui (Anhui): 大別山 Dabie Shan (Tapieh Shan). 江西省 Jiangxi (Kiangsi): 九江 Jiujiang (Kiukiang) (Elwes and Edwards, 1893).

Ypthima eckweileri Uémura & Koiwaya, 2001

Ypthima eckweileri Uémura & Koiwaya, 2001: 3–4, figs. 1c (androconia), 3 (♂ genitalia), pl. 1, fig. 6 ♂ (UP & UN).

Holotype ♂, Liuba/Zhangliang, 1400–1600m, Shaanxi (Shensi) (KMNH).

Ypthima eckweileri: Huang, 2016: 244, figs. 1 ♂ (UP), 2 ♂ (UN).

Liping Natural Reserve, Nanzheng County, Shaanxi.

Ypthima eckweileri: Liu, 2016: 250, fig. 11 ♂ (UP & UN). S.

Gansu: Heimaguan; Kangxian.

所検標本. 2 ♂♂.

前翅長: ♂, 21–22 mm.

地理的分布. 中国北部.

分布記録. 中国陝西省 Shaanxi (Shensi): Liuba/Zhangliang; Liping Natural Reserve, 南鄭区 Nanzheng County (Huang, 2016). 甘肅省 Gansu (Kansu): 黑馬関 Heimaguan (Liu, 2016); 康県 Kangxian (Liu, 2016).

Ypthima perfecta Leech, 1892

Additional synonymic list after Uémura & Koiwaya, 2001.

Ypthima perfecta : Wang & Zhao, 2000: 138, figs. ♂ (UP), ♂ (UN), ♀ (UP), ♀ (UN). Changsha, Hunan.

Ypthima perfecta : Uémura & Koiwaya, 2001: 4–5, figs. 1d–f (androconia), 4, 5 (♂ genitalia), pl. 1, figs. 3 ♂ (UP & UN, Kangding), 4 ♂ (UN, Zonggag), 5 ♂ (UN, Siguniang Shan). Redescription.

所検標本. 185 ♂♂, 69 ♀♀.

前翅長: ♂, 20–21 mm; ♀, 19–22 mm.

地理的分布. 中国西部.

分布記録. 中国湖南省 Hunan: 長沙 Changsha (Wang and Zhao, 2000). 四川省 Sichuan (Szechwan): 青城山 Qingcheng Shan (Tintsien Shan); 汶川 Wenchuan; 臥龍 Wolong; 四姑娘山 Siguniang Shan; 宝興 Baoxing (Paohing = Muping); 康定 Kangding (Kangting = Tatsienlu); Wawu-kow (South, 1902); Huang-mu-chang (South, 1902); 瓦屋山 Wa-shan (= Wawushan) (South, 1902); Chia-kou-ho (South, 1902); 小金 Xiao Jin; 松崗 Zonggag (Sungkang); 西昌 Xichang. 貴州省 Guizhou (Kweichow) (South, 1902).

備考: 中国安徽省から *Ypthima perfecta perfecta*, *Y. esakii*, *Y. motschulskyi*, *Y. imitans*, *Y. iris* (*motschulskyi*-group に属する種の同定間違い), *Y. multistriata* の記録 (Wu & Ma, 2016) があるが図示された標本写真から判断して, これらの同定ははなはだ疑わしくシノニムリストおよび分布記録には引用しなかった。湖南省 長沙からの記録 (Wang and Zhao, 2000) は実物標本の再確認が必要である。

Ypthima kitawakii Uémura & Koiwaya, 2001

Ypthima kitawakii Uémura & Koiwaya, 2001: 5–6, figs. 1g–k (androconia), 6 (♂ genitalia), pl. 1, fig. 7 ♂ (UP & UN).

Holotype ♂, Dali (Tali), Yunnan (KMNH).

所検標本. 36 ♂♂, 5 ♀♀.

前翅長: ♂, 20–22 mm; ♀, 22–23 mm.

地理的分布. 中国雲南省.

分布記録. 中国雲南省 Yunnan: 昆明 Kunming; 大理 Dali (Tali); 麗江 Lijiang (Likiang).

Ypthima akragas Fruhstorfer, 1911***Ypthima akragas akragas*** Fruhstorfer, 1911

Additional synonymic list after Uémura & Koiwaya, 2001.

Ypthima akragas akragas : Uémura & Koiwaya, 2001: 8, figs. 11 (androconia), 7 (♂ genitalia), pl. 1, fig. 9 ♂ (UP & UN).

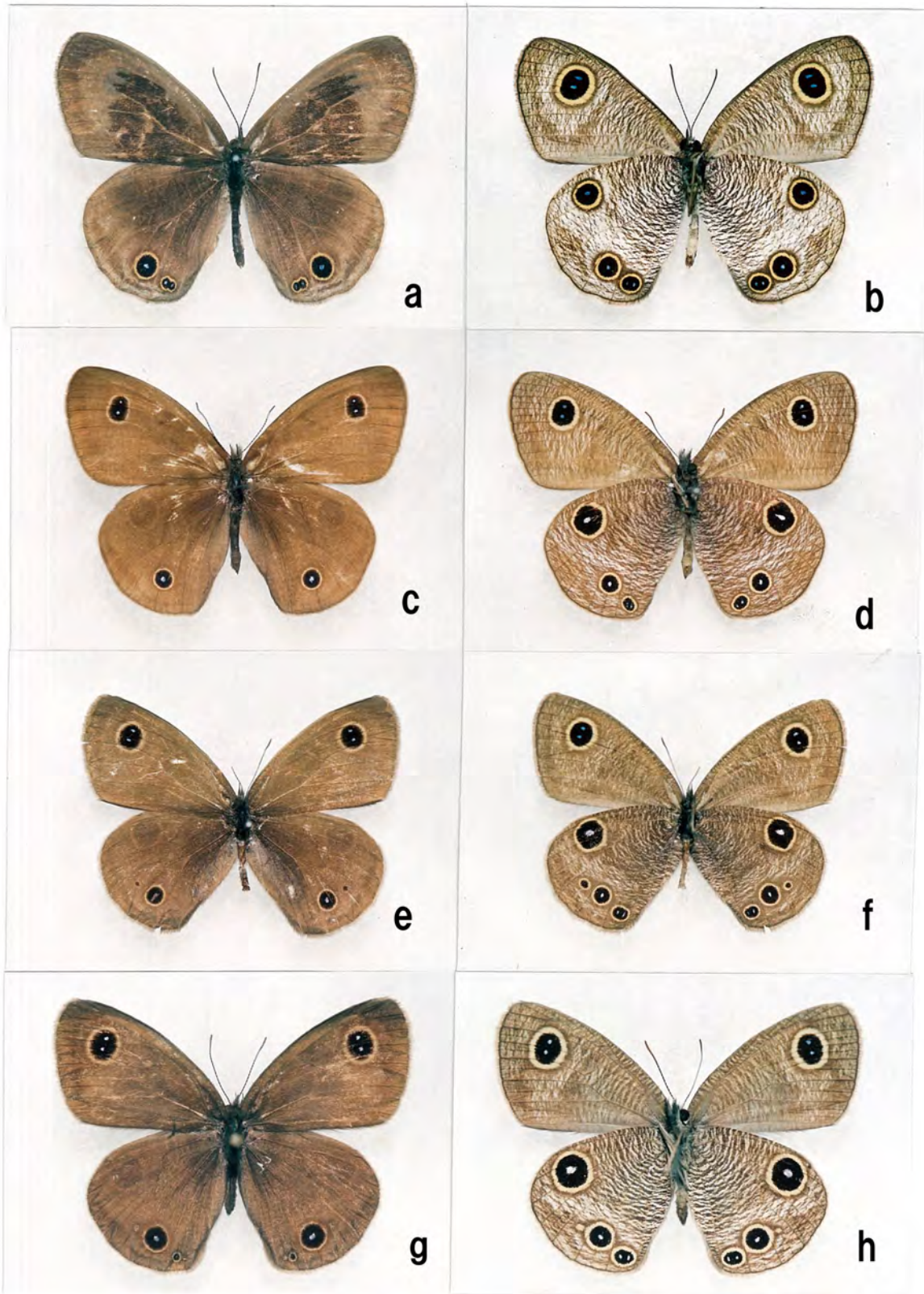
Redescription.

所検標本. 49 ♂♂, 12 ♀♀.

前翅長: ♂, 23–27 mm (N. Taiwan), 22–24 mm (C. Taiwan); ♀, 23 mm (C. Taiwan).

地理的分布. 台湾.

分布記録. 台湾 Taiwan (分布の詳細は山中, 1974: 11–13 を参照されたい).



第3図. *Ypthima motschulskyi*-group 各種. a, *Y. imitans* ♂ 表面, Longsheng, Guangxi; b, 同裏面; c, *Y. sordida* ♂ 表面, Taibai Shan, Shaanxi; d, 同裏面; e, *Y. eckweileri* ♂ 表面, Liuba/Zhangliang, Shaanxi; f, 同裏面; g, *Y. perfecta* ♂ 表面, Wenchuan, Sichuan; h, 同裏面.

Ypthima akragas perfectoides Uémura & Koiwaya, 2001
Ypthima akragas perfectoides Uémura & Koiwaya, 2001: 8–9,
 figs. 1m (androconia), 8 (♂ genitalia), pl. 1, fig. 8 ♂ (UP
 & UN). Holotype ♂, Kangding (Kanting = Tatsienlu),
 Sichuan (Szechwan) (KMNH).

所検標本. 6 ♂♂.

前翅長: ♂, 22–23 mm.

地理的分布. 中国四川省.

分布記録. 中国四川省 Sichuan (Szechwan): 康定
 Kangding (Kanting = Tatsienlu).

Ypthima esakii Shirôzu, 1960

Ypthima esakii esakii Shirôzu, 1960

Ypthima esakii Shirôzu, 1960: 128–129, text-fig. 155 (♂
 genitalia), pl. 33, figs. 253 ♂ (UP), 254 ♂ (UN), 255 ♂
 (UN). Holotype ♂, Hori, C. Formosa (KUEL).

Ypthima esakii: Hiura, 1970: 273–283, pl. 24, figs. 17 ♂ (UP
 & UN), 18 ♂ (UP & UN), 19 ♀ (UP & UN), 20 ♀ (UP &
 UN). Taxonomy.

Ypthima esakii: Yamanaka, 1974: 10–11. Distribution.

Ypthima esakii: Shirôzu & Shima, 1979: 275, pl. 39, fig. 44 (♂
 genitalia), pl. 50, fig. 75 (♀ genitalia), pl. 69, figs. 135 ♂
 (UP), 136 ♂ (UN). Taiwan. Phylogeny.

Ypthima esakii: Lee, 1990: 129–131, 236. Taiwan, early stage.

Ypthima esakii: Lee & Zhu, 1992: 83, fig. 18 ♂ (UP), 84, fig. 18
 ♂ (UN).

Ypthima esakii: Shirôzu & Ueda, 1992: 149. Checklist.

Ypthima esakii: Chou *et al.*, 1994: 394, figs. ♀ (UP & UN).
 Taiwan.

Ypthima multistriata multistriata: Chou *et al.*, 1994: 395, figs. ♂
 (UP & UN) [in part]. Taiwan.

Ypthima esakii: Lee & Wang, 1999: 104, 224–225, figs. ♀ (UP),
 ♀ (UN) [in part]. Taiwan.

Ypthima esakii esakii: Takáhashi & Kiuchi, 2011: 4–13, figs.
 13 ♂ (UP), 14 ♂ (UN), 15 ♀ (UP), 16 ♀ (UN), 23 (♂
 genitalia), 32 (larva), 39 (pupa), 41 (distribution).

所検標本. 26 ♂♂, 5 ♀♀.

前翅長: ♂, 21–23 mm; ♀, 20–22 mm.

地理的分布. 台湾.

分布記録. 台湾 Taiwan: 金龍寺 (Takáhashi and
 Kiuchi, 2011); 陽明山公園 (Takáhashi and Kiuchi, 2011);
 慈雲寺 (Takáhashi and Kiuchi, 2011); 烏来 (Takáhashi and
 Kiuchi, 2011) (分布の詳細は山中, 1974: 10–11 を参照

された).

Ypthima esakii wangi Lee, 1998

Ypthima wangi Lee, in Wang & Lee, 1998: 49–50, figs. ♂ (UP &
 UN, lectotype), ♀ (UP & UN), ♂ genitalia. Lectotype ♂,
 Guisandao Is., Ilan, Taiwan (Taiwan Museum) [lectotype
 designated by Uémura & Koiwaya, 2001["2000"]: 51, 58].

Ypthima wangi: Lee & Wang, 1999: 107, 224–225, figs. ♂ (UP),
 ♂ (UN), ♀ (UP), ♀ (UN). Taiwan.

Ypthima esakii wangi: Takáhashi & Kiuchi, 2011: 4–13, figs. 1–4
 ♂ (UP), 5–10 ♂ (UN), 11 ♀ (UP), 12 ♀ (UN), 22 (♂
 genitalia), 27–31 (larvae), 36–37 (pupae), 41 (distribution),
 43–44 (habitat).

所検標本. 2 ♂♂, 1 ♀.

前翅長: ♂, 20–22 mm; ♀, 22 mm. (Takáhashi and
 Kiuchi, 2011).

地理的分布. 台湾.

分布記録. 台湾 Taiwan: 野柳 (Takáhashi and Kiuchi,
 2011); 南雅 (Takáhashi and Kiuchi, 2011); 猴硐 (Takáhashi
 and Kiuchi, 2011); 三貂角 (Takáhashi and Kiuchi, 2011);
 龜山島 (Takáhashi and Kiuchi, 2011).

Ypthima masakii Ito, 1947

Ypthima masakii Ito, 1947: 275–278, text-figs. A (♂ genitalia),
 B (♂ genitalia), C (♂ genitalia), D (androconia), pl. 23, figs.
 2 ♂ (UP, holotype), 4 ♂ (UN, holotype). Holotype ♂,
 Ishigaki-jima Is. (KUEL).

Ypthima masakii: Shirôzu, 1965: 203, pl. 55, figs. 3a ♂ (UP,
 Iriomote Is.), 3b ♂ (UN, Iriomote Is.), 3c ♀ (UN, Iriomote
 Is.).

Ypthima masakii: Shirôzu & Shima, 1979: 276, pl. 40, fig. 46 (♂
 genitalia), pl. 51, fig. 77 (♀ genitalia), pl. 70, figs. 137
 ♂ (UP, Iriomote Is.), 138 ♂ (UN, Iriomote Is.), 139 ♀ (UP,
 Iriomote Is.), 140 ♀ (UN, Iriomote Is.). Phylogeny.

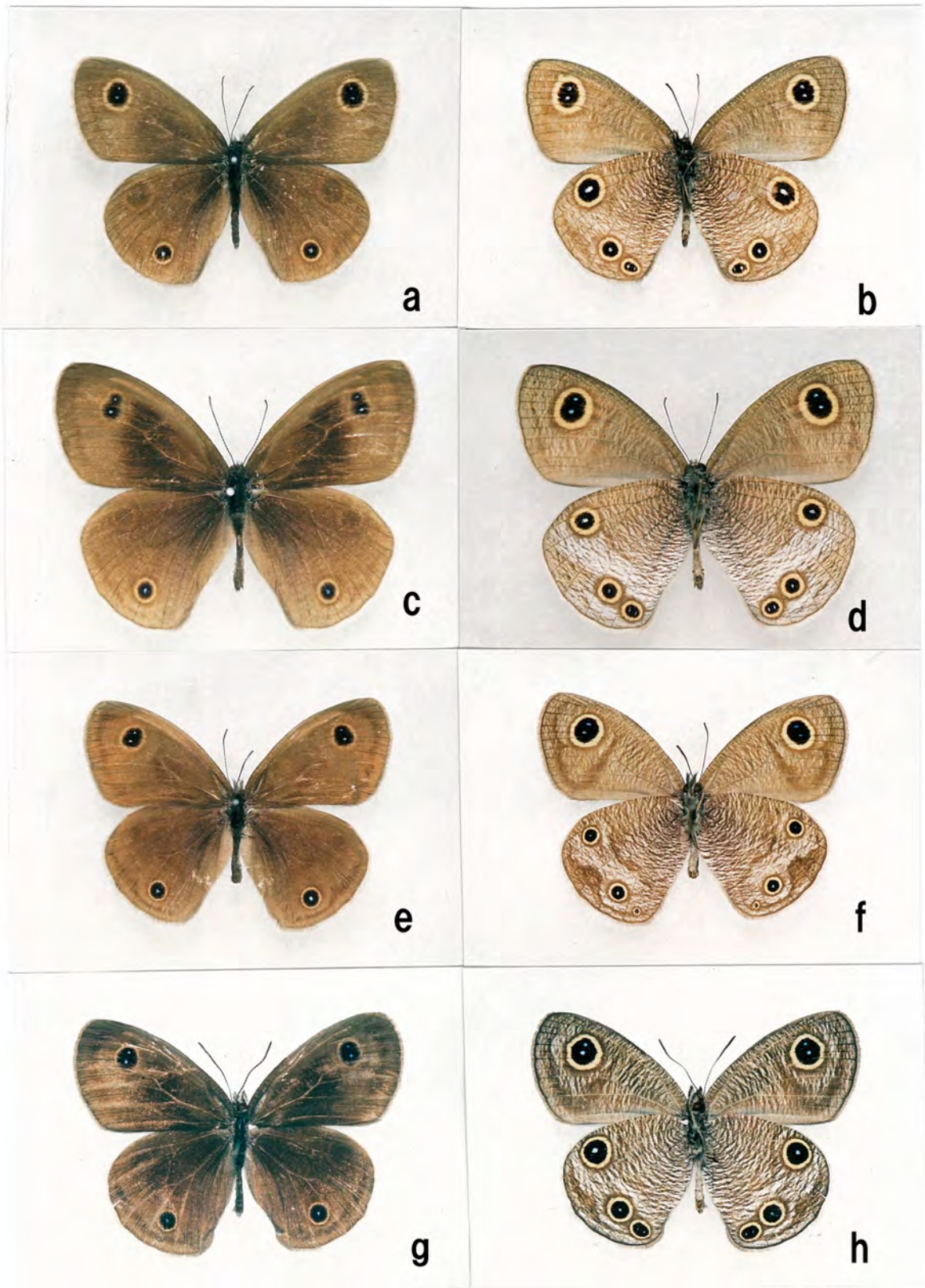
所検標本. 139 ♂ 62 ♀.

前翅長: ♂, 20–21 mm (第1化), 17–19 mm (第2化
 以降); ♀, 20–22 mm (第1化), 18–20 mm (第2化以
 降).

地理的分布. 八重山列島石垣島, 西表島.

分布記録. 石垣島 (Shirôzu, 1965). 西表島 (Shirôzu,
 1965).

備考. 第1化の個体は第2化以降の個体に較べ前翅
 長で約1～2 mm 大型となる.



第4図. *Ypthima motschulskyi*-group 各種. a, *Y. kitawakii* ♂表面, Dali, Yunnan; b, 同裏面; c, *Y. akragas akragas* ♂表面, Taiwan; d, 同裏面; e, *Y. esakii esakii* ♂表面, Taiwan; f, 同裏面; g, *Y. esakii wangi* ♂表面, Taiwan; h, 同裏面.

Ypthima multistriata* Butler, 1883**Ypthima multistriata ganus* Fruhstorfer, 1911**

Additional synonymic list after Uémura & Koiwaya, 2001["2000"].

Ypthima motschulskyi : Wang & Zhao, 2000: 141, figs. ♂ (UP), ♂ (UN), ♀ (UP), ♀ (UN). Changbai Mountain, Jilin.

?*Ypthima chinensis* : Wang & Zhao, 2000: 148–149, figs. ♀ (UP), ♀ (UN) (in part). Tangjiahe, Sichuan.

Ypthima initans[sic] : Wang & Zhao, 2000: 152, figs. ♂ (UP), ♂ (UN), ♀ (UP), ♀ (UN). Panzhuhua, Sichuan.

Ypthima multistriata ganus : Uémura & Koiwaya, 2001["2000"]: 50, 55–57, figs. 1a (♂ genitalia), 2/17 ♂ (UP & UN, Cheju Do), 3/18 ♂ (UP & UN, Tsushima), 5/20 ♂ (UP & UN, Sichuan), 6/21 ♂ (UP & UN, Sichuan), 7/22 ♂ (UP & UN, Guangxi). Tsushima, Cheju Do (Quelpart I.), Korea, North-eastern, Northern, Central, Southern, and Western China. [Synonymy with *Y. multistriata koreana*.]

Ypthima ganus tsushimana : Takáhashi & Kiuchi, 2011: 7, fig. 26 (♂ genitalia).

Ypthima multistriata : Seto, 2013: 125–126, pl. 32, figs. S3.1 (Shisanling), S3.2 (Jinshan). Beijing: Jinshan; Shisanling; Huangta.

Ypthima multistriata: Huang, 2016: 244. Liping Natural Reserve, Nanzheng County, Shaanxi. Danangou, Fengxian County, Shaanxi. Pianpiangou, Zhouqu County, Gansu.

Ypthima multistriata koreana : Tshikolovets & Streltsov, 2019: 236–237, pl. 30, figs. 14 ♂ (UP & UN)(Holotype of *koreana*), 15 ♂ (UP & UN)(Bol'shekekhtsirskii Reserve, Bychikha vic.).

所檢標本. 372 ♂♂, 122 ♀♀.

前翅長: ♂, 19–24 mm (1st brood), 18–20 mm (2nd brood); ♀, 18–24 mm (1st brood), 18–20 mm (2nd brood).

地理的分布. 対馬, 濟州島, 朝鮮半島, 中国全土 (青海省, チベット, 雲南省, 海南島を除く), ロシア極東 (ハバロフスク地方南西部).

分布記録. 対馬. 濟州島. 朝鮮半島: 光陵; 靈光 (日浦, 1970). 中国吉林省 Jilin (Kirin): 吉林 Jilin (Kirin) (Wang, 1999); 長白山 Changbai Mountain (Wang and Zhao, 2000). 遼寧省 Liaoning: 本溪 Benxi (Penki) (Wang, 1999). 北京市 Beijing (Peking): 八大處 Badachu (Yang *et al.*, 1994); 黃塔 Huangta (Seto, 2013); 金山 Jinshan (Yang *et al.*, 1994; Seto, 2013); 十三陵 Shisanling (Seto, 2013); [Tshili] (Forster, 1948). 山東省 Shandong (Shantung): 青島 Qingdao (Tsingtao) (Fruhstorfer, 1911). 江蘇省 Jiangsu (Kiangsu): 南京 Nanjing (Nanking)

(Forster, 1948). 上海市 Shanghai (Forster, 1948). 浙江省 Zhejiang (Chekiang): 莫干山 Mogan Shan (Mokan Shan) (Forster, 1948); 天目山 Tianmu Shan (Tienmu Shan); 四明山 Siming Shan (Szeming Shan); 天台山 Tiantai Shan (Tientai Shan); 龍泉 Longquan (Longchuan). 江西省 Jiangxi (Kiangsi): 九江 Jiujiang (Kiukiang); 修水 Xiushui (Siushui); 武夷山 Wuyi Shan. 広東省 Guangdong (Kwangtung): 九連山 Jiulian Shan (Kiulin Shan). 安徽省 Anhui (Anhwei): 大別山 Dabie Shan (Tapie Shan). 河南省 Henan (Honan): 鷄公山 Jigong Shan (Chikung Shan). 湖南省 Hunan: 南岳 Nanyue. 湖北省 Hubei (Hupeh): 神農架 Shennongjia. 陝西省 Shaanxi (Shensi): 西安 Xi'an (Sian); 太白山 Taibai Shan (Tapai Shan); 秦嶺 Qin Ling (Chin Ling); 佛坪 Foping; Liping Natural Reserve, 南鄭区 Nanzheng County (Huang, 2016). Danangou, 鳳県 Fengxian County (Huang, 2016). 甘肅省 Gansu (Kansu): Pianpiangou, 舟曲 Zhouqu County (Huang, 2016). 四川省 Sichuan (Szechwan): 重慶 Chongqing (Aoyama, 1998); 青城山 Qingcheng Shan (Tintsien Shan); 峨眉山 Emei Shan (Omei Shan); 雅安 Ya'an (Yaan); 康定 Kangding (Kangting = Tatsienlu); 西昌 Xichang (Sichang); 攀枝花 Panzhuhua (Wang and Zhao, 2000). 広西壮族自治区 Guangxi (Kwangsi): 苗兒山, 龍勝 Miao'er Shan, Longsheng; 大瑤山, 金秀 Dayao (Tayao) Shan Mts., Jinxiu (Kinsiu). ロシア極東 (Tshikolovets and Streltsov, 2019).

***Ypthima multistriata forsteri* Uémura & Koiwaya, 2001**

Additional synonymic list after Uémura & Koiwaya, 2001["2000"].

Ypthima multistriata forsteri Uémura & Koiwaya, 2001["2000"]: 50–51, 57, figs. 1b (♂ genitalia), 8/23 ♂ (UP & UN, holotype), 9/24 ♂ (UP & UN, paratype). Holotype ♂, Dali (Tali), Yunnan, Western China (KMNH).

所檢標本. 40 ♂♂, 2 ♀♀.

前翅長: ♂, 20–22 mm; ♀, 22 mm.

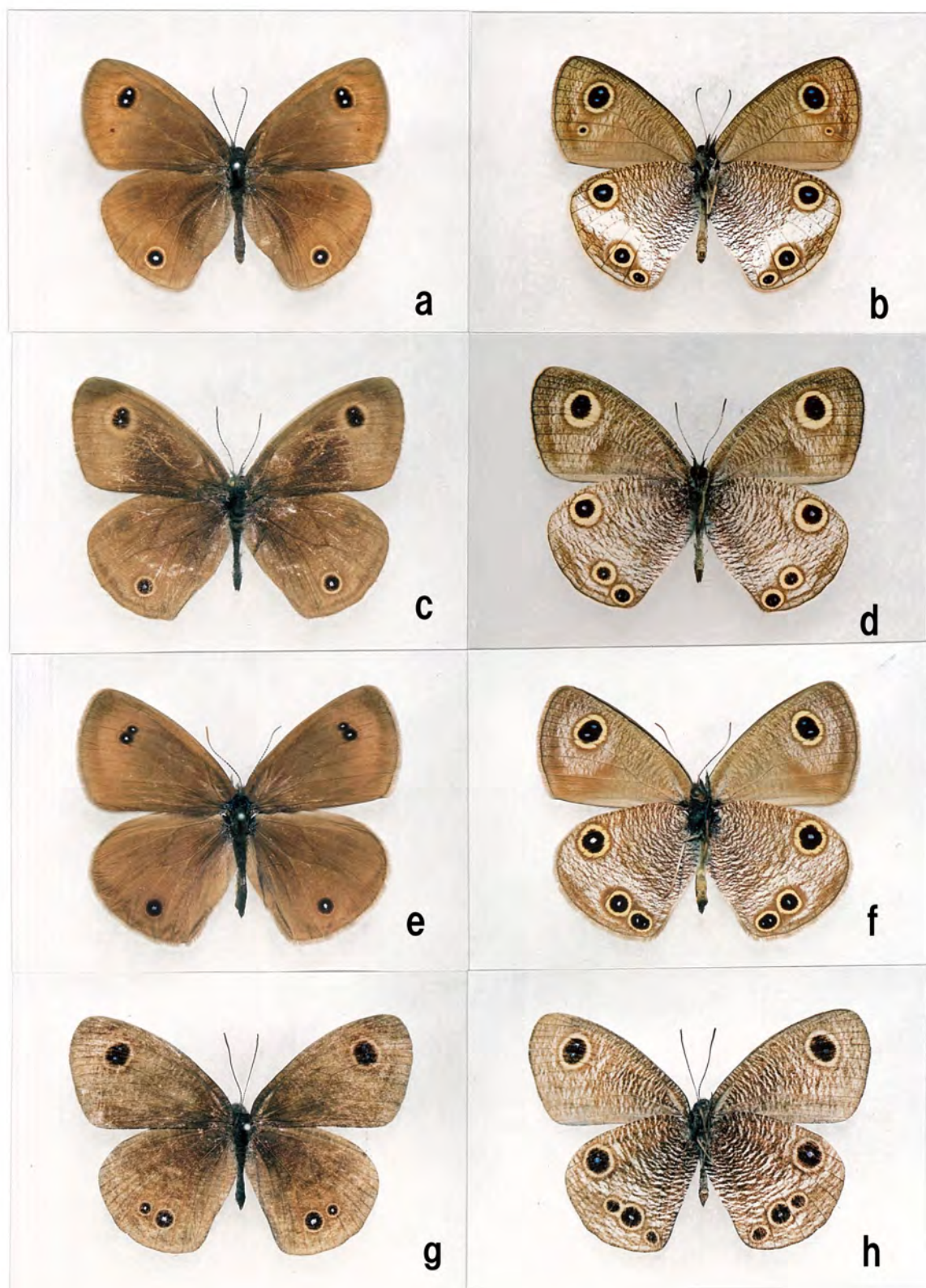
地理的分布. 中国雲南省.

分布記録. 中国雲南省 Yunnan: 曲靖 Qujing (Kutsing); 昆明 Kunming; 大理 Dali (Tali); 麗江 Lijiang (Likiang).

***Ypthima multistriata multistriata* Butler, 1883**

Additional synonymic list after Uémura & Koiwaya, 2001["2000"].

Ypthima multistriata multistriata : Uémura & Koiwaya, 2001["2000"]: 51, 57–58, figs. 10/25 ♂ (UP & UN, Taiwan). Taiwan.



第5図. *Ypthima motschulskyi*-group 各種. a, *Y. masakii* ♂表面, Iriomote-jima Is.; b, 同裏面; c, *Y. multistriata ganus* ♂表面, Zhejiang; d, 同裏面; e, *Y. motschulskyi motschulskyi* ♂表面, Kwangneung, Korea; f, 同裏面; g, *Y. yangjiahei* ♂表面, Nidadan, Yunnan; h, 同裏面.

Ypthima multistriata : Takáhashi & Kiuchi, 2011: 4–13, figs. 17 ♂ (UP), 18 ♂ (UN), 19 ♀ (UP), 20 ♀ (UN), 24 (♂ genitalia), 33–34 (larvae), 40 (pupa).

所検標本. 106 ♂♂, 29 ♀♀.

前翅長: ♂, 19–23 mm; ♀, 20–23 mm.

地理的分布. 台湾. 蘭嶼 (紅頭嶼).

分布記録. 台湾 Taiwan (分布の詳細は山中, 1974: 7–10 を参照されたい). 蘭嶼 (紅頭嶼) Lan Hsu (Hungtao Hsu).

***Ypthima multistriata nipponica* Murayama, 1969**

Additional synonymic list after Uémura & Koiwaya, 2001[“2000”].

Ypthima multistriata nipponica : Uémura & Koiwaya, 2001 [“2000”]: 51, 58, figs. 4/19 ♂ (UP & UN, Uwajima, Ehime, Shikoku).

Ypthima nipponica : Takáhashi & Kiuchi, 2011: 7, fig. 25 (♂ genitalia).

所検標本. 93 ♂♂, 15 ♀♀.

前翅長: ♂, 19–22 mm (1st brood), 18–19 mm (2nd brood); ♀, 18–23 mm (1st brood), 19 mm (2nd brood).

地理的分布. 日本南西部.

分布記録. 日本南西部 (分布の詳細は日浦, 1962: 32–33; 有田・前田, 2017 を参照されたい).

***Ypthima motschulskyi* (Bremer & Grey, 1852)**

***Ypthima motschulskyi amphithea* Ménétrière, 1859**

Additional synonymic list after Uémura & Koiwaya, 2001[“2000”].

Ypthima motschulskyi amphithea : Uémura & Koiwaya, 2001 [“2000”]: 54, 59, figs. 11/26 ♂ (UP & UN). South Amur, Ussuri and North-eastern China.

Ypthima motschulskyi amphithea : Tshikolovets & Streltsov, 2019: 235–236, pl. 30, figs. 9 ♂ (UP & UN)(Khasanskiy distr., Pos’yet), 11 ♂ (UP & UN)(Baranowsky), 12 ♂ (UP & UN)(Shmakovka st., Ozernoe), 13 ♀ (UP & UN)(Khasanskiy distr., Pos’yet).

所検標本. 6 ♂♂.

前翅長: ♂, 20–22 mm.

地理的分布. アムール南部, ウスリー, 中国東北部.

分布記録. ウスリー: Komissarovka River Valley at village Barabash-Levada (Gorbunov, 2001); Gamova Peninsula (Gorbunov, 2001). 中国黒龍江省 Heilongjiang (Heilungkiang): 亜布洛尼 Yablonya (= 亜布力 Yabuli)

(Murayama, 1969); 葦沙河 Weishaho (Hiura, 1970). 吉林省 Jilin (Kirin): 吉林 Jilin (Kirin) (Wang, 1999); 延吉 nr Yanji (Yenki). 遼寧省 Liaoning: 小市 Xiaoshi (Tamaki, 1997).

Ypthima motschulskyi motschulskyi

(Bremer & Grey, 1852)

Additional synonymic list after Uémura & Koiwaya, 2001[“2000”].

Ypthima motschulskyi motschulskyi : Uémura & Koiwaya, 2001 [“2000”]: 54, 59–60, figs. 14/29 ♂ (UP & UN, Hubei), 15/30 ♂ (UP & UN, Hebei), 16/31 ♂ (UP & UN, Northern Korea). Korea, Northern and Central China.

Ypthima motschulskyi : Seto, 2013: 125, pl. 32, figs. S2.1 (Donglingshan), S2.2 (Qingshui). Beijing: Jinshan; Donglingshan; Xiaolongmen; Qingshui.

Ypthima motschulskyi motschulskyi : Tshikolovets & Streltsov, 2019: pl. 30, figs. 10 ♂ (UP & UN)(Lectotype of *motschulskyi*).

所検標本. 26 ♂♂, 10 ♀♀.

前翅長: ♂, 21–24 mm; ♀, 22–23 mm.

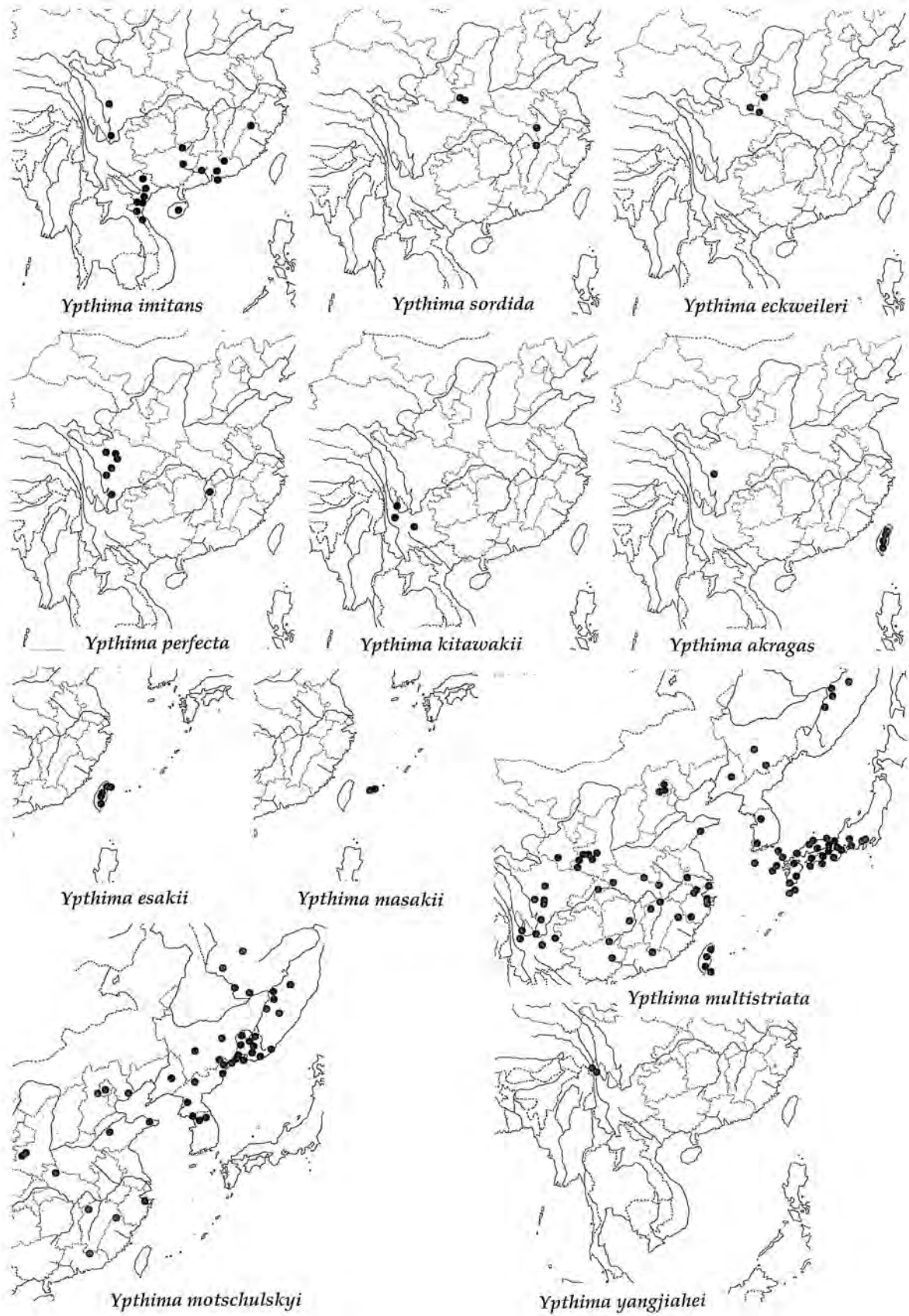
地理的分布. 朝鮮半島, 中国北部・中部.

分布記録. 朝鮮半島: 会寧 (日浦, 1970); 鏡城 (日浦, 1970); 熙川 (日浦, 1970); 江界 (日浦, 1970); 平壤; 開城 (日浦, 1970); 南洞 (日浦, 1970); 光陵; 春川. 中国北京市 Beijing (Peking): 海淀 Haidian (Yang *et al.*, 1994); 東靈山 Dongling Shan (Yang *et al.*, 1994; Seto, 2013); 清水 Qingshui (Seto, 2013); 小龍門 Xiaolongmen (Seto, 2013); 金山 Jinshan (Seto, 2013). 河北省 Hebei (Hopeh): 盧龍 Lulong (Lulong). 山東省 Shandong (Shantung): 泰安 Tai’an (Taian) (Mu, 1992); 牟平 Muping (Mowping) (Mu, 1992); 泰山 Tai Shan (Forster, 1948). 浙江省 Zhejiang (Chekiang): 四明山 Siming Shan (Szeming Shan). 江西省 Jiangxi (Kiangsi): 修水 Xiushui (Siushui); 武夷山 Wuyi Shan. 湖北省 Hubei (Hupeh): 武当山 Wudang Shan (Wutang Shan). 陝西省 Shaanxi (Shensi): 秦嶺 Qin Ling (Chin Ling); 宝鷄 Baoji (Paoki)/六壩 Liuba (Liupa).

Ypthima motschulskyi pumilus

Uémura & Koiwaya, 2001

Ypthima motschulskyi pumilus Uémura & Koiwaya, 2001[“2000”]: 54, 60, figs. 12/27 ♂ (UP & UN, holotype), 13/28(UP & UN, paratype). Holotype ♂, Julian Shan (Kiulin Shan), Guangdong (Kwangtung) (KMNH).



第6図. *Ypthima motschulskyi*-group 各種の分布図.

所検標本. 4 ♂♂, 2 ♀♀.

前翅長: ♂, 16–17 mm; ♀, 17–18 mm.

地理的分布. 中国広東省.

分布記録. 中国広東省 Guangdong (Kwangtung): 九連山 Jiulian Shan (Kiulin Shan).

Ypthima yangjiahei Huang, 2001

Ypthima ciris: Watkins, 1927: 325–326. Mekong Valley (nr Shanatsan 6200'; N. of Yeichih 6400'; nr Yangtsa).

Ypthima yangjiahei Huang, 2001: 91–92, figs. 78 (♂ genitalia), 113 (androconia), pl. 6, fig. 45 (Holotype ♂, UP & UN). Holotype ♂, Longpo to Nidadan, Nujiang Valley, S.E. Tibet (Biological Laboratory, Qingdao Education College, Qingdao).

所検標本. 1 ♂.

前翅長: ♂, 21.5 mm (Huang, 2001).

地理的分布. 中国雲南省, チベット.

分布記録. 中国雲南省 Yunnan: Mekong Valley (nr Shanatsan; 葉枝北方 North of Yehchih; nr Yangtsa) (Watkins, 1927). チベット Tibet: Longpo to Nidadan, Nujiang Valley.

引用文献

- 青山潤三 [Aoyama, J.], 1998. 中国のチョウ. 東海大学出版会, 東京, xvii+392 p.
- 有田 齊・前田善広 [Arita, H. and Maeda, Y.] (編), 2017. 珠玉の標本箱 日本産蝶類標本写真およびデータベース (15) ジャノメチョウ亜科 ② ウラナミジャノメ属. NRC 出版, 大阪, 33 p.
- Bascombe, M.J., Johnston, G. and Bascombe, F.S., 1999. *The Butterflies of Hong Kong*. Academic Press, London, xiii+422 p., 222 pls.
- Chou, I., Chang, B.-S., Huang, B.-K., Huang, R.-X., Li, C.-L., Li, Y.-X., Liu, S.-K., Qian, X.-C., Tong, X.-S., Wang, Z.-G. and Wu, X.-F., 1994. *Monographia Rhopalocerorum Sinensium*. Henan Scientific and Technological Publishing House, Zhengzhou, 7 + 18 + 854 p. (In Chinese.)
- Elwes, H.J. and Edwards, J., 1893. A revision of the genus *Ypthima*, with especial reference to the characters afforded by the male genitalia. *Transactions of the Entomological Society of London*, 1893: 1–54, pls. 1–3.
- Forster, W., 1948. Beiträge zur Kenntnis der ostasiatischen *Ypthima*-Arten (Lep. Satyrid.). *Mitteilungen der Münchener Entomologischen Gesellschaft*, 34: 472–492, pls. 30–33.
- Fruhstorfer, H., 1911. Gattung *Ypthima*. Seitz, A. (ed.), *Die Gross-Schmetterlinge der Erde (2) : Indo-australischen Tagfalter*, Alfred Kernen, Stuttgart, 286–294, pl. 99.
- Gorbunov, P.Y., 2001. *The butterflies of Russia: classification, genitalia, keys for identification (Lepidoptera: Hesperioidea and Papilionoidea)*. Thesis, Ekaterinburg, 320 p, including 54 pls.
- Gu, M.-B. and Chen, P.-Z., 1997. *Butterflies in Hainan Island*. China Forestry Publishing House, Beijing, 10+357 p. (In Chinese.)
- Hill, D.S., Johnston, G. and Bascombe, M.J., 1978. Annotated checklist of Hong Kong Butterflies. *Memoirs Hong Kong Natural History Society*, (11): 1–62.
- 日浦 勇 [Hiura, I.], 1962. 日本におけるジャノメチョウ科の採集記録. 大阪市立自然科学博物館研究報告, (15): 29–63.
- 日浦 勇 [Hiura, I.], 1970. 対馬をめぐるウラナミジャノメ群の分類地理. 国立科学博物館専報, (3): 273–284, pls. 23–24.
- Huang, H., 2001. Report oh H. Huang's 2000 expedition to SE. Tibet for Rhopalocera (Insecta, Lepidoptera). *Neue Entomologische Nachrichten*, 51: 65–133, pls. 1–9.
- Huang, S.-Y. 2016. Report on the butterflies collected from Chongqing, Shaanxi and Gansu, China in 2015 (Lepidoptera: Papilionoidea, Hesperioidea). *Atalanta*, 47(1/2): 241–248.
- 伊藤修四郎 [Ito, S.], 1947. 琉球産 *Ypthima* 属蝶類三種. *Zephyrus*, 9: 272–278.
- Joicey, J.J. and Talbot, G., 1924–1929. A catalogue of the Lepidoptera of Hainan. *Bulletin of the Hill Museum, Witley*, 1: 514–538 (1924); 2: 3–18, 183–191 (1928); 3: 151–162 (1929).
- Lee, C.-L. and Zhu, B.-Y., 1992. *Atlas of Chinese Butterflies*. Shanghai Far Eastern Publishing, Shanghai, 80 + 6 p., 152 pls. (In Chinese.)
- Lee, J.-Y., 1990. *Illustrations of Butterflies in Taiwan*. 2. Taiwan Museum, Taipei, 7 + 252 p. (In Chinese.)
- Lee, J.-Y. and Wang, H.-Y., 1999. *Butterflies of Taiwan*. I-Lan County Museum of Natural History, I-Lan, 268 p. (In Chinese.)
- Liu, Z.-H. 2016. A contribution to the butterfly fauna of S. Gansu, China (Lepidoptera: Papilionoidea, Hesperioidea). *Atalanta*, 47(1/2): 249–254.
- Marsh, J.C.S., 1968. *Hong Kong Butterflies*. Edn. 2. Shell

- Company of Hong Kong Ltd., Hong Kong, 8 + 113 p., 34 pls.
- Monastyrskii, A.L. and Devyatkin, A.L., 2003. *Butterflies of Vietnam (an illustrated checklist)*. Thong Nhat Printing House, Hanoi, 56 p., 14 pls.
- Moore, F., 1878. List of Lepidopterous insects collected by the late R. Swinhoe in the Island of Hainan. *Proceedings of the Zoological Society of London*, **1878** : 695–708.
- Mu, J.-Y., 1992. Lu, X.-X. (ed.), *Butterflies & Moths of Mount Tai. 2. Rhopalocera*. Shandong Science and Technology Press, Jinan, p. 131–140, pls. 1–6.
- Murayama, S., 1969. Some satyrid-butterflies of Japan and Korea, with description of a new species and two new races. *Tohoku Konchu Kenkyu*, **4**: 17–21, pl. 2.
- 瀬藤健一郎 [Seto, K.], 2013. 北京蝶類研究. 1st edition, 自費出版. 東京. 248 p., including 38 pls.
- 寫 洪 [Shima, H.], 1988. *Ypthima* 属の系統論 (ジャノメチヨウ科). 日本鱗翅学会特別報告, (6) : 69–81.
- 白水 隆 [Shirôzu, T.], 1960. 原色台湾蝶類大図鑑. 保育社, 大阪, 5 + 481 p., 76 pls., 479 text-figs.
- 白水 隆 [Shirôzu, T.], 1965. 原色圖鑑日本の蝶. 北隆館, 東京, 265 + 11 p., 56 pls.
- Shirôzu, T. and Shima, H., 1979. On the natural groups and their phylogenetic relationships of the genus *Ypthima* Hübner mainly from Asia (Lepidoptera : Satyridae). *Sieboldia*, **4** : 231–295, pls. 18–71.
- Shirôzu, T. and Ueda, K., 1992. Nymphalidae. Heppner, J.B. and Inoue, H. (ed.), *Lepidoptera of Taiwan. 1 (Pt. 2 : Checklist)*. Scientific Publishers, Gainesville, p. 140–150.
- Sonan, J., 1938. A list of the butterflies of Hainan, with descriptions of two new subspecies of Hesperidae. *Transactions of the Natural History Society of Formosa*, **28** : 348–372.
- South, R., 1902. *Catalogue of the collection of Palaearctic Butterflies formed by the late John Henry Leech, and presented to the Trustees of the British Museum by his mother, Mrs. Eliza Leech*. British Museum (Natural History), London, 6 + 229 p., 2 pls., with a portrait.
- 高橋真弓・城内穂積 [Takáhashi, M. and Kiuchi, H.], 2011. “カメヤマウラナミジャノメ *Ypthima wangi* Lee, 1998” (台湾産) の分類学上の階位について. *Butterflies (Teinopalpus)*, (58): 4–13.
- 玉置高志 [Tamaki, T.], 1997. 中国遼寧省の蝶. 昆虫と自然, **32**(1): 19–25.
- Tshikolovets, V. and Streltsov, A., 2019. *The Butterflies of Russian Far East (Khabarovskiy and Primorskiy Krai, Jewish Autonomous and Amur Regions), Sakhalin and Kuril Islands*. Vadim Tshikolovets, Pardubice. 408 p., 11 + 53 pls.
- 植村好延 [Uémura, Y.], 2018. ウラナミジャノメ属 *megalomma* 群の総説. 豊橋市自然史博物館研究報告, (28): 11–26.
- 植村好延 [Uémura, Y.], 2019. ウラナミジャノメ属 *tappana* 群の総説. *Bulletin of the Toyosato Museum of Entomology*, (28): 1–6.
- 植村好延 [Uémura, Y.], 2020a. ウラナミジャノメ属 *motschulskyi* 群の総説 その1. 豊橋市自然史博物館研究報告, (30): 31–41.
- 植村好延 [Uémura, Y.], 2020b. ウラナミジャノメ属 *sakra* 群のシノニムリスト. *Bulletin of the Toyosato Museum of Entomology*, (30): 1–20.
- 植村好延 [Uémura, Y.], 投稿中. ウラナミジャノメ属 *sakra* 群の同定ガイド. 進化生物研究.
- Uémura, Y. and Koiwaya, S., 2001[“2000”]. Taxonomy on the species of *multistriata* and *motschulskyi* of the genus *Ypthima* Hübner (Lepidoptera : Satyridae) in China and its neighbouring areas. *Bulletin of the Hoshizaki Green Foundation*, (4) : 49–62. (In Japanese and English.)
- Uémura, Y. and Koiwaya, S., 2001. New or little known butterflies of the genus *Ypthima* Hübner (Lepidoptera : Satyridae) from China, with some synonymic notes. Part II. *Futao*, (36) : 2–10, pl. 1.
- Uémura, Y. and Monastyrskii, A.L., 2004. A revisional catalogue of the genus *Ypthima* Hübner (Lepidoptera: Satyridae) from Vietnam. *Bulletin of Kitakyushu Museum of Natural History and Human History Series A*, **2**: 17–45.
- Wang, H.-Y. and Lee, J.-Y., 1998. *Lepidoptera of Guisandao Islet*. I-Lan County Museum of Natural History, I-Lan, 7+166 p. (In Chinese.)
- Wang, H.-Y. and Zhao, L., 2000. *Lepidoptera of China. 5, Satyridae*. National Taiwan Museum, Taipei, 10 + 233 p. (In Chinese.)
- Wang, Z.-C., 1999. *Monographia of original colored & size Butterflies of China's Northeast*. Jilin Scientific and Technological Publishing House, Jilin, 318 p. (In Chinese.)
- Watkins, H.T.G., 1927. Butterflies from N.W. Yunnan. *Annals and Magazine of Natural History, (series 9)*, **19** : 313–344.
- Wu, S.-J. and Ma, X.-Y., 2016. *Records of Butterflies in Anhui Province*. Anhui Scientific and Technological Publishing House, Hefei, 5 + 233 p. (In Chinese.)
- Wu, X.-F., 1988. *Butterflies of the Ling-Nan Oasis*. Academy

Journals, Beijing, 8 + 191 p., [24] pls. (In Chinese.)

山中正夫 [Yamanaka, M.], 1974. 台湾産蝶類の分布 (4). 蝶と蛾, 25, Suppl. 1 : 1-60.

Yang, H., Wang, C.-H., and Yu, P., 1994. [*The Butterflies of Beijing in colour.*] Scientific and Technical Documentation Press, Beijing, 7 + 128 p. (In Chinese.)